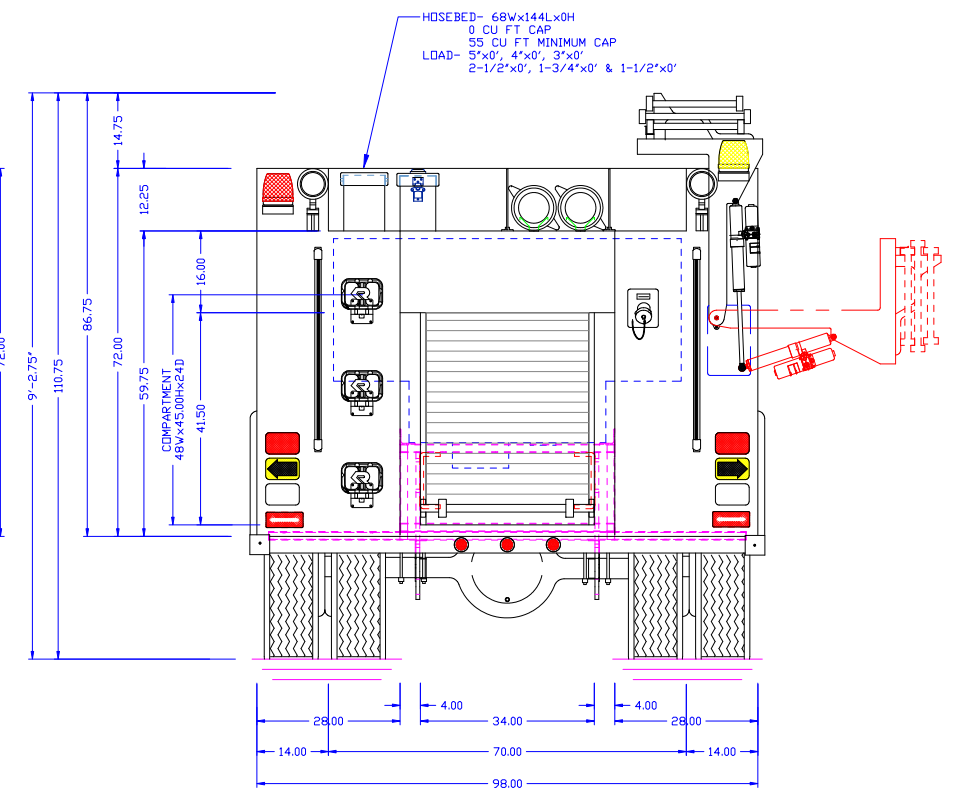
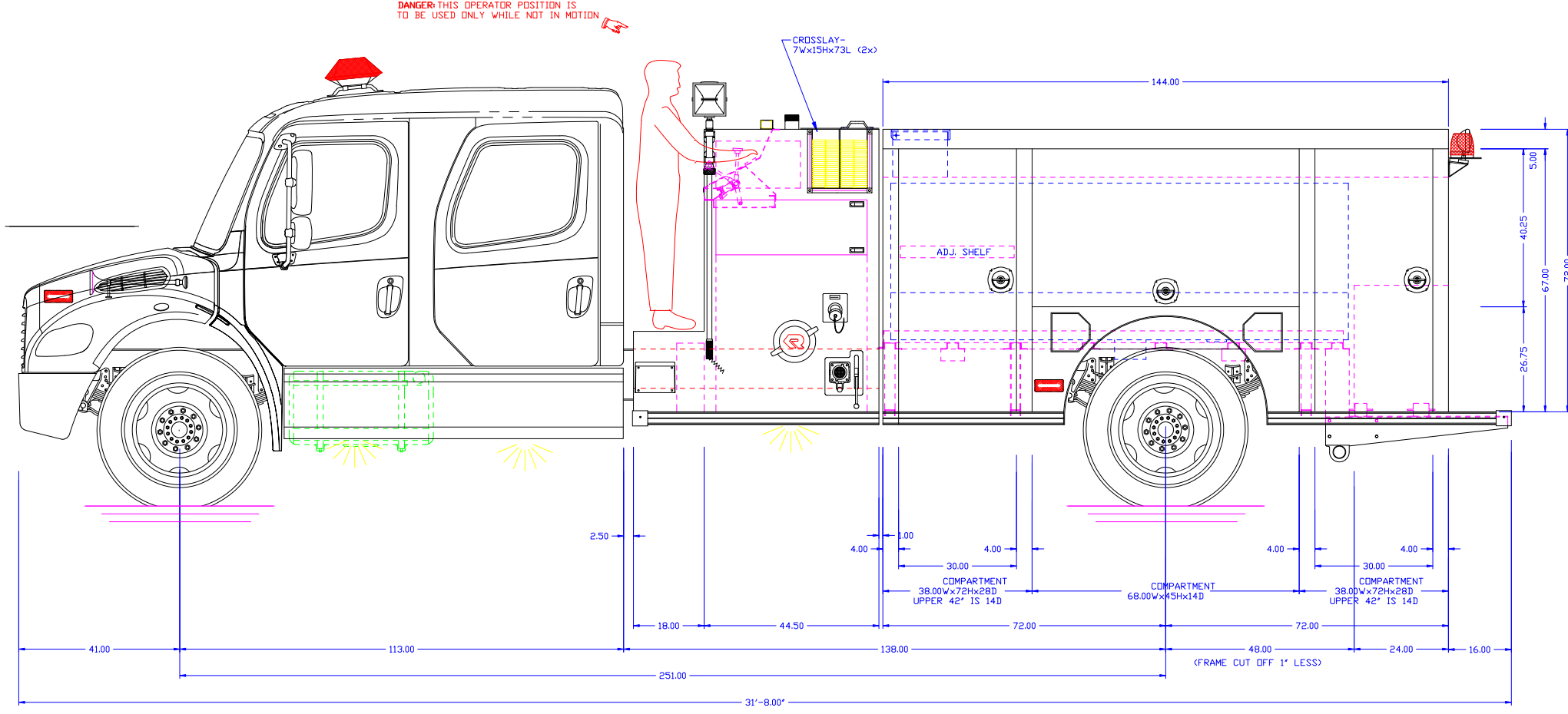


APPROVED BY:

NOTE: UNLOADED HEIGHTS MAY BE 4" ABOVE HEIGHTS SHOWN

DANGER: THIS OPERATOR POSITION IS TO BE USED ONLY WHILE NOT IN MOTION

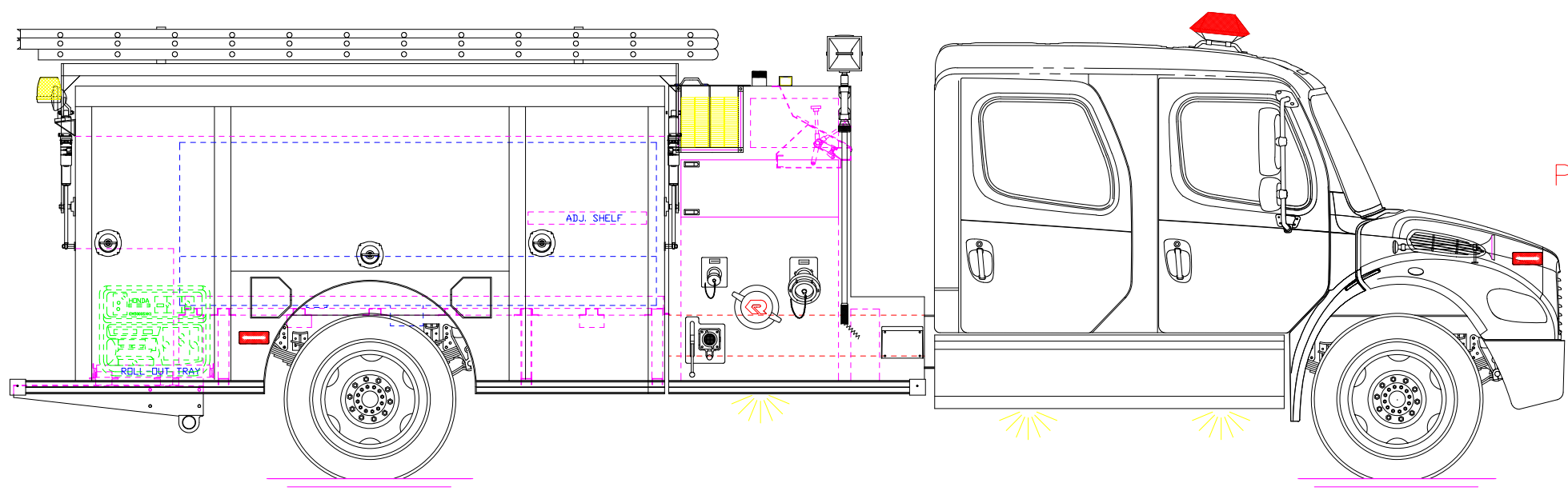


NOTE: TANK CAP- 1000 GAL. POLYPROPYLENE
 20 GAL. CAP. FOAM CELL IN MAIN TANK (1x)
 PUMP CAP- 1250 GPM WATERDUS
 DIMENSIONS SHOWN ARE APPROXIMATE AND ARE SUBJECT TO MINOR DEVIATIONS DURING CONSTRUCTION
 NOT ALL ITEMS IN SPECS ARE SHOWN ON THIS PRINT
 SPOT LIGHT- 2 ON REAR
 COMPARTMENT INTERIORS SPATTER PAINT
 TOP & SIDE PUMP PANELS BLACK THERMO
 NFPA UPPER LIGHT PACKAGE- CODE 3
 NFPA LOWER LIGHT PACKAGE- CODE 3

OK FOR PRODUCTION
 INITIALS:
 JOB NUMBER: 14814
 DATE: 2/18/09

MAIN FILE:
 DEPT:
 DEALER:

PRODUCTION APPROVED



NONE	MAXIMUM HEIGHT	DFTM MMA	DFTM MMA	DFTM
NONE	MAXIMUM LENGTH	DATE: 02-09-09	DATE: 02-23-09	REVISED
98"	BODY WIDTH	CENTURION AT		
		CITY OF WAKEENEY		
		wakeeney, ks		