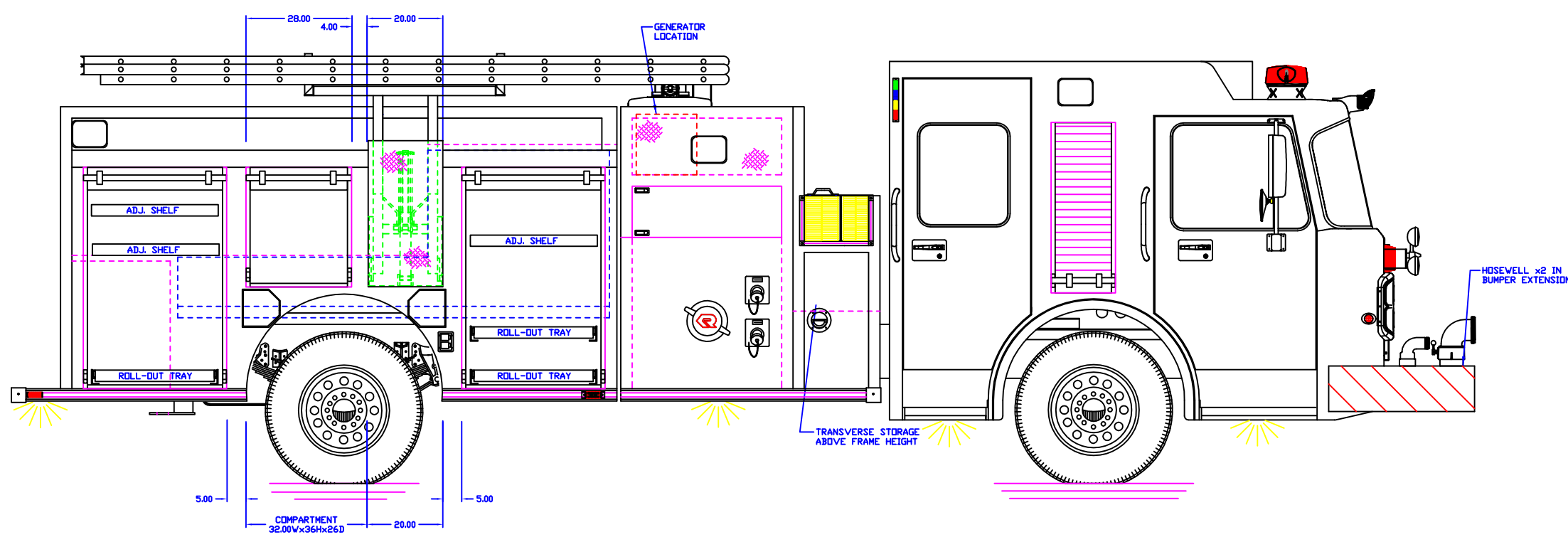
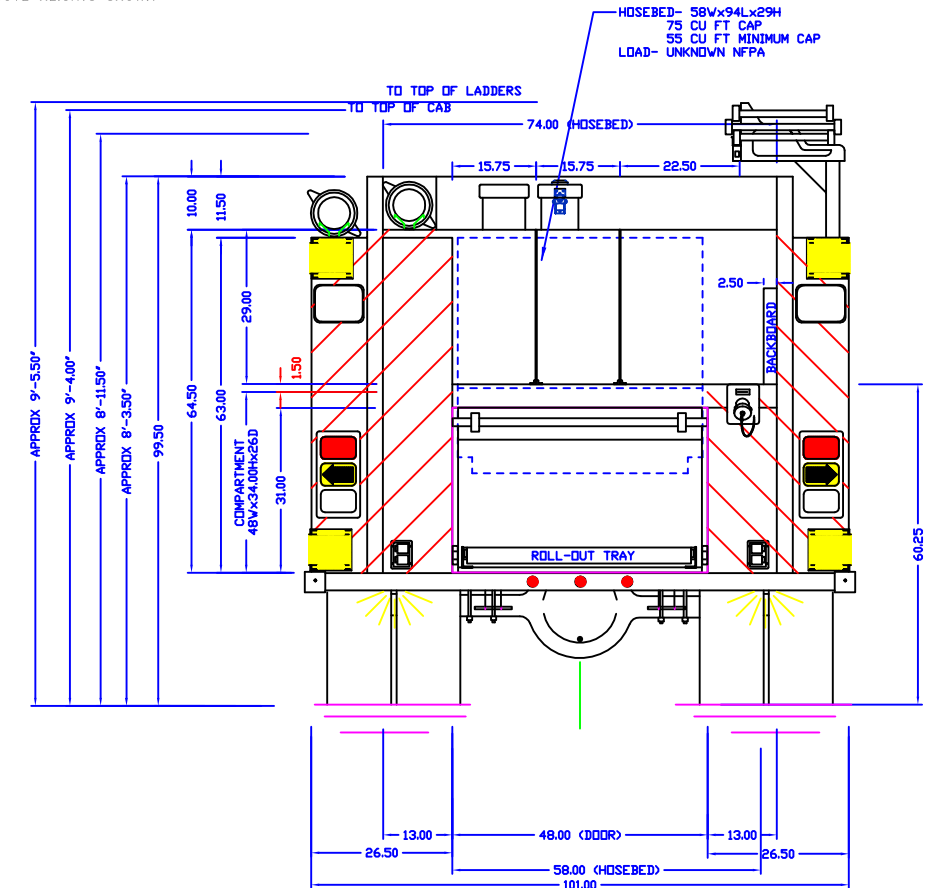
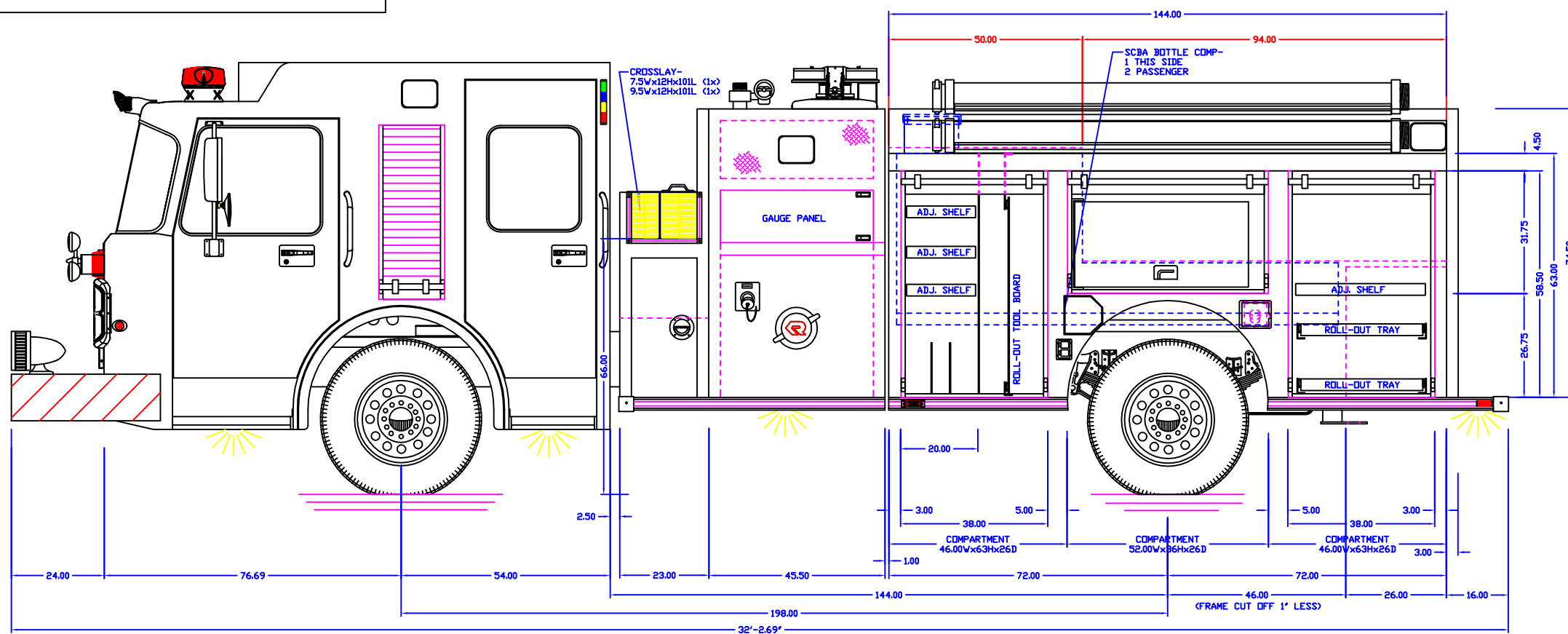


APPROVED BY:

NOTE: UNLOADED HEIGHTS MAY BE 4" ABOVE HEIGHTS SHOWN



JOB # 13976
OK
SAO
03-21-07

NOTE: TANK CAP- 500 GAL POLYPROPYLENE
20 GAL CAP FDAM CELL IN MAIN TANK (1x)
PUMP CAP- 1250 GPM WATEROUS
DIMENSIONS SHOWN ARE APPROXIMATE AND ARE SUBJECT TO MINOR DEVIATIONS DURING CONSTRUCTION
NOT ALL ITEMS IN SPECS ARE SHOWN ON THIS PRINT
COMPARTMENT INTERIORS NATURAL FINISH
SIDE PUMP PANELS BLACK THERMOPLASTIC
NFPA UPPER LIGHT PACKAGE- POWER ARC
NFPA LOWER LIGHT PACKAGE- POWER ARC
ROLL UP DOOR EFFECTIVE OPENING- 3" NARROWER AND 5" SHORTER THAN ACTUAL OPENING IN BODY

NONE	MAXIMUM HEIGHT	DEPTH W/LH	DEPTH BVZ	DEPTH BVZ
33'	MAXIMUM LENGTH	DATE 05-09-06	REVISED 9/1/06	REVISED 12/29/06
101"	BODY WIDTH	CENTRAL		



DONALD WESCOTT, CO
PRODUCTION DRAWING