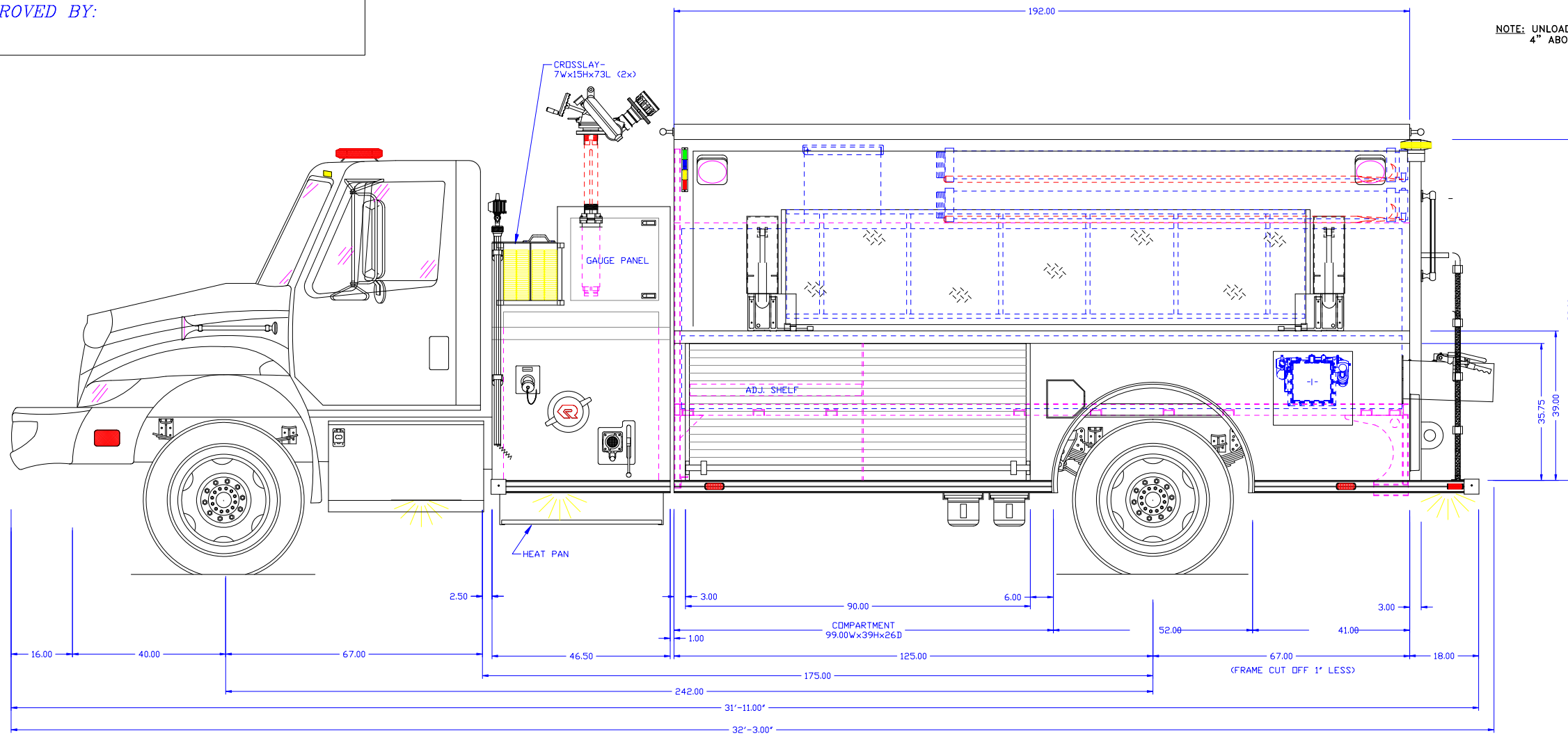
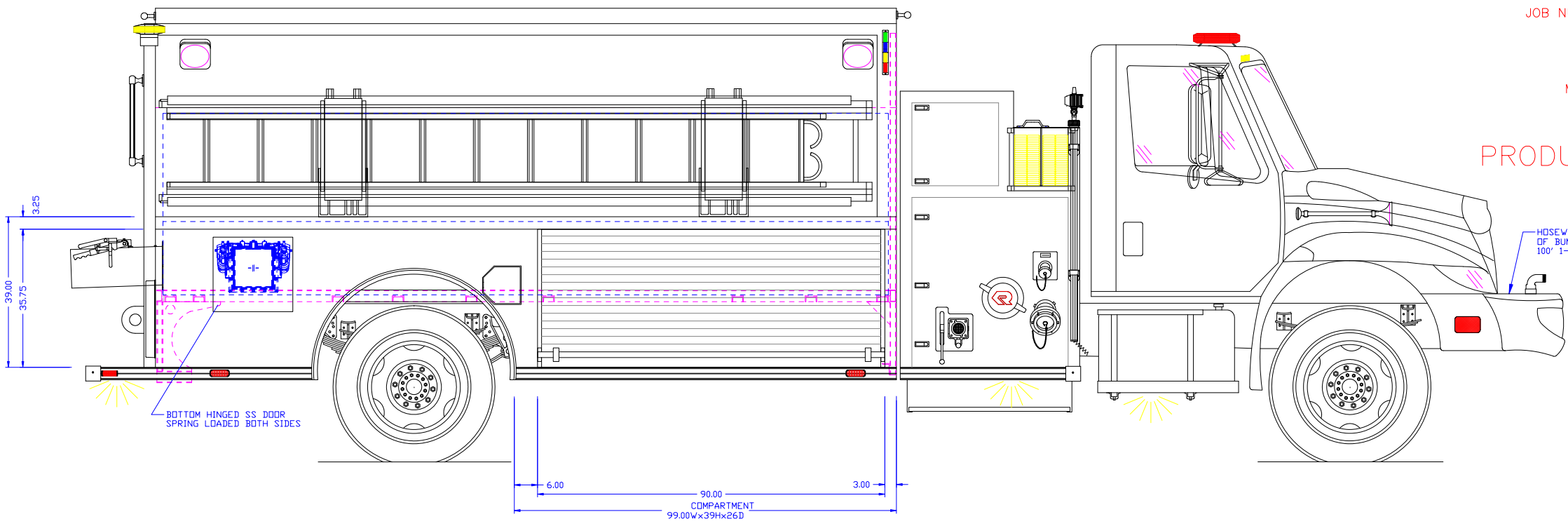
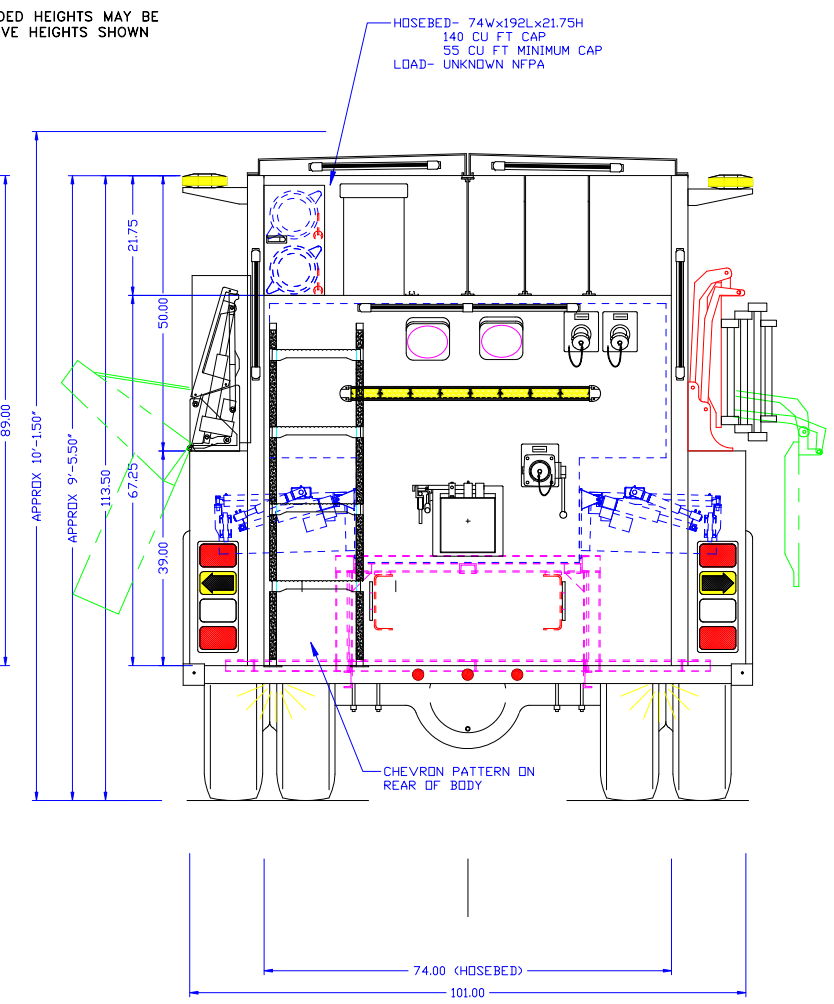


APPROVED BY:



NOTE: UNLOADED HEIGHTS MAY BE 4" ABOVE HEIGHTS SHOWN



OK FOR PRODUCTION
 INITIALS: JW
 JOB NUMBER: 15188
 DATE: 7/2/10

MAIN FILE: _____
 DEPT: _____
 DEALER: _____
PRODUCTION APPROVED

NOTE: TANK CAP- 2000 GAL POLYPROPYLENE
 PUMP CAP- 1250 GPM WATEROUS
 DIMENSIONS SHOWN ARE APPROXIMATE AND ARE SUBJECT TO MINOR DEVIATIONS DURING CONSTRUCTION
 NOT ALL ITEMS IN SPECS ARE SHOWN ON THIS PRINT
 COMPARTMENT INTERIORS RED SPATTER PAINT
 SIDE PUMP PANELS BRUSHED STAINLESS
 NFPA UPPER LIGHT PACKAGE- WHELEN
 NFPA LOWER LIGHT PACKAGE- WHELEN

NONE	MAXIMUM HEIGHT	DPTH W/LM	DPTH JR/W	DPTH MMA
NONE	MAXIMUM LENGTH	DATE 03-08-10	REVISED 03-31-10	REVISED 04-01-10
101"	BODY WIDTH	DPTH JR/W	REVISED 05-20-10	REVISED 07-02-10



FALCON FPD, CO